

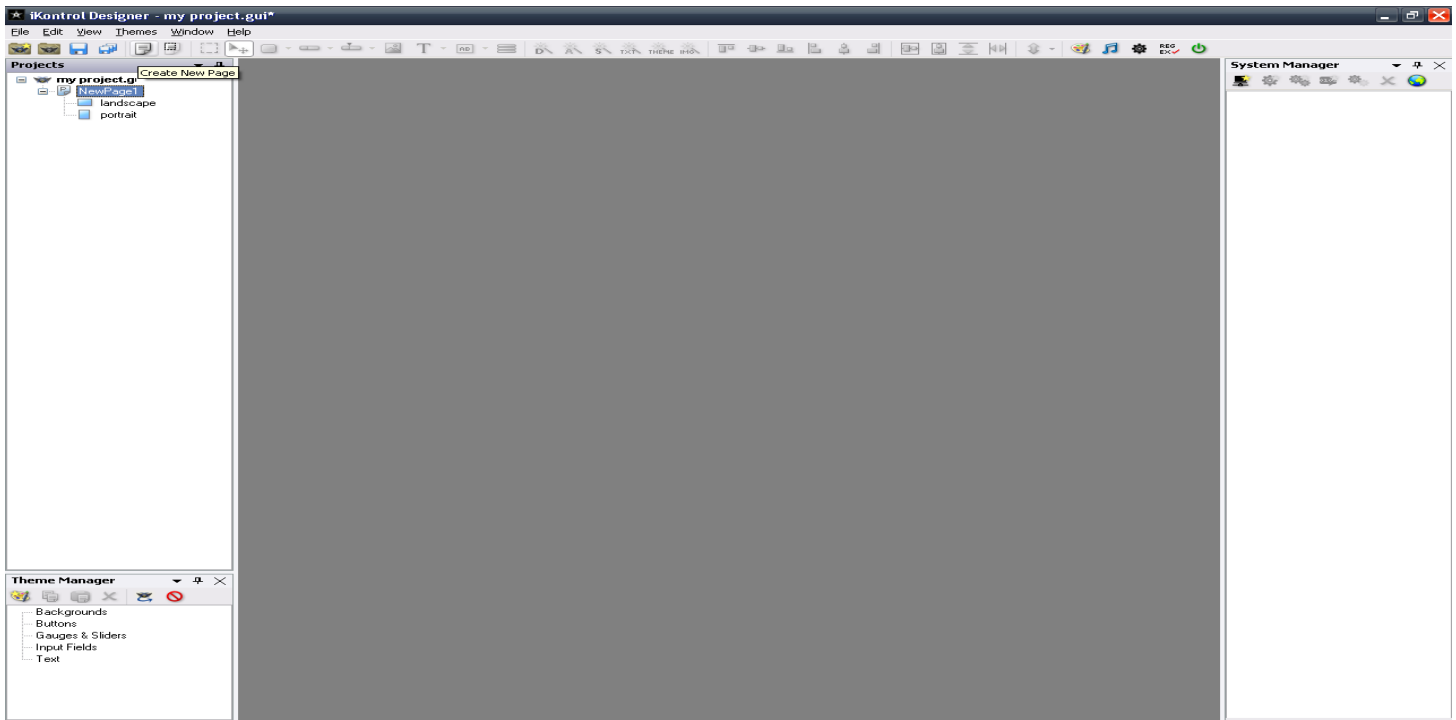
# iKontrol Tutorial

- A. Before you start this training tutorial, you must obtain the iKontrol licence using your iPod (iTouch, iPhone, or iPad) UDID (go to [www.ikontrol.biz](http://www.ikontrol.biz) for information on how to get your device's 40 digits UDID and licensing information, or as shown on the right side----->).

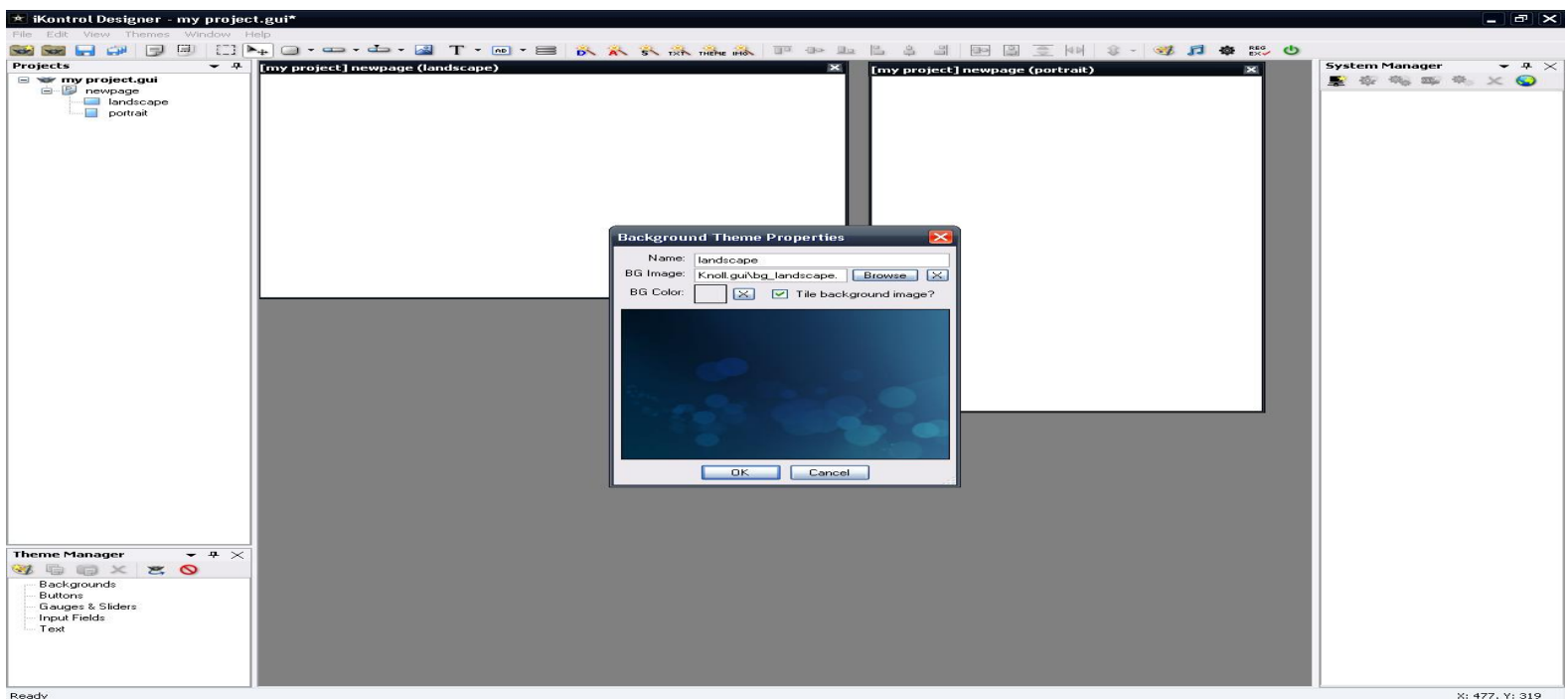
## THREE STEP IDENTIFIER ID NUMBER PROCESS



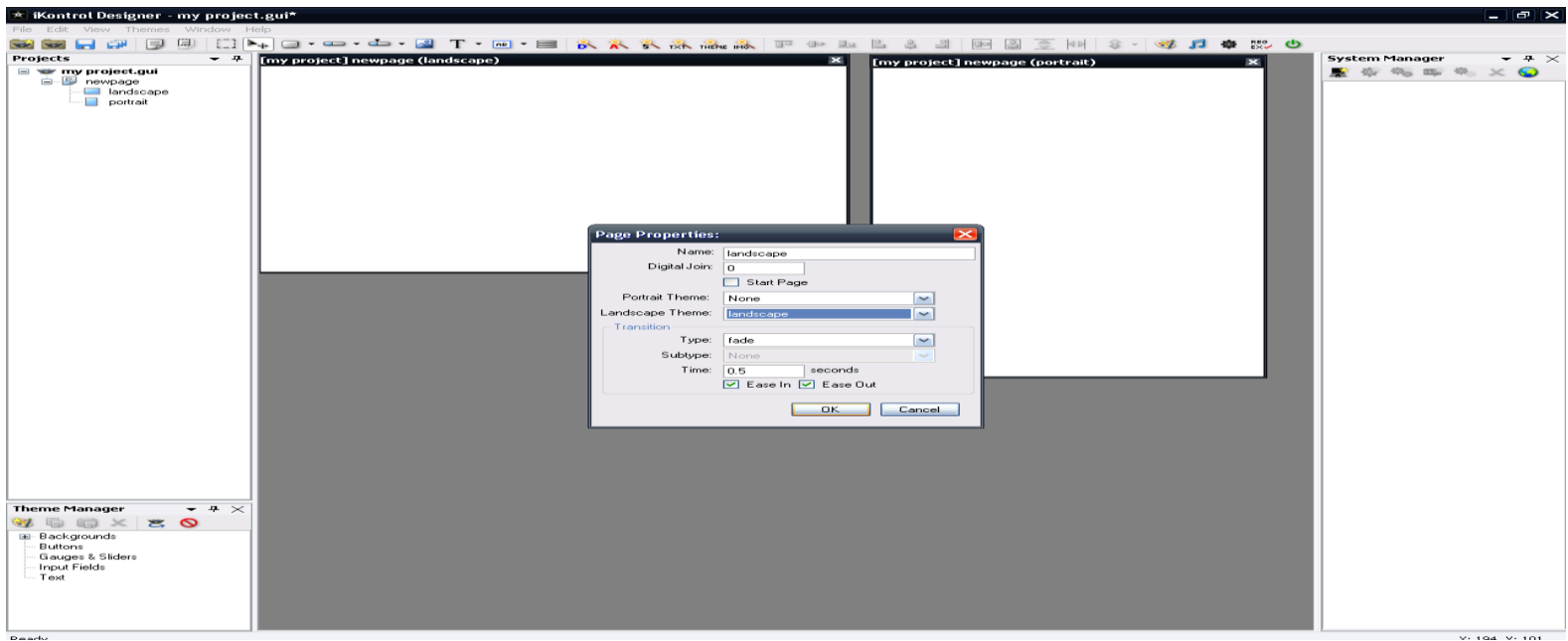
- B. Download iKontrol Designer software from [www.ikontrol.biz](http://www.ikontrol.biz) . Open the designer software and create a new project (i.e. named « myproject » and save it. You will see a new icon named « my project » on the left side under project and a new window will pop up (Project Properties). The only thing that needs to be set is under page size. Choose the page size (iPhone/iPod Touch for an iPhone template). Click OK.
- C. Create a new page by clicking the new page icon on the menu bar « Landscape » and « Portrait » will appear as subpages under « my project » on the top left of the page.



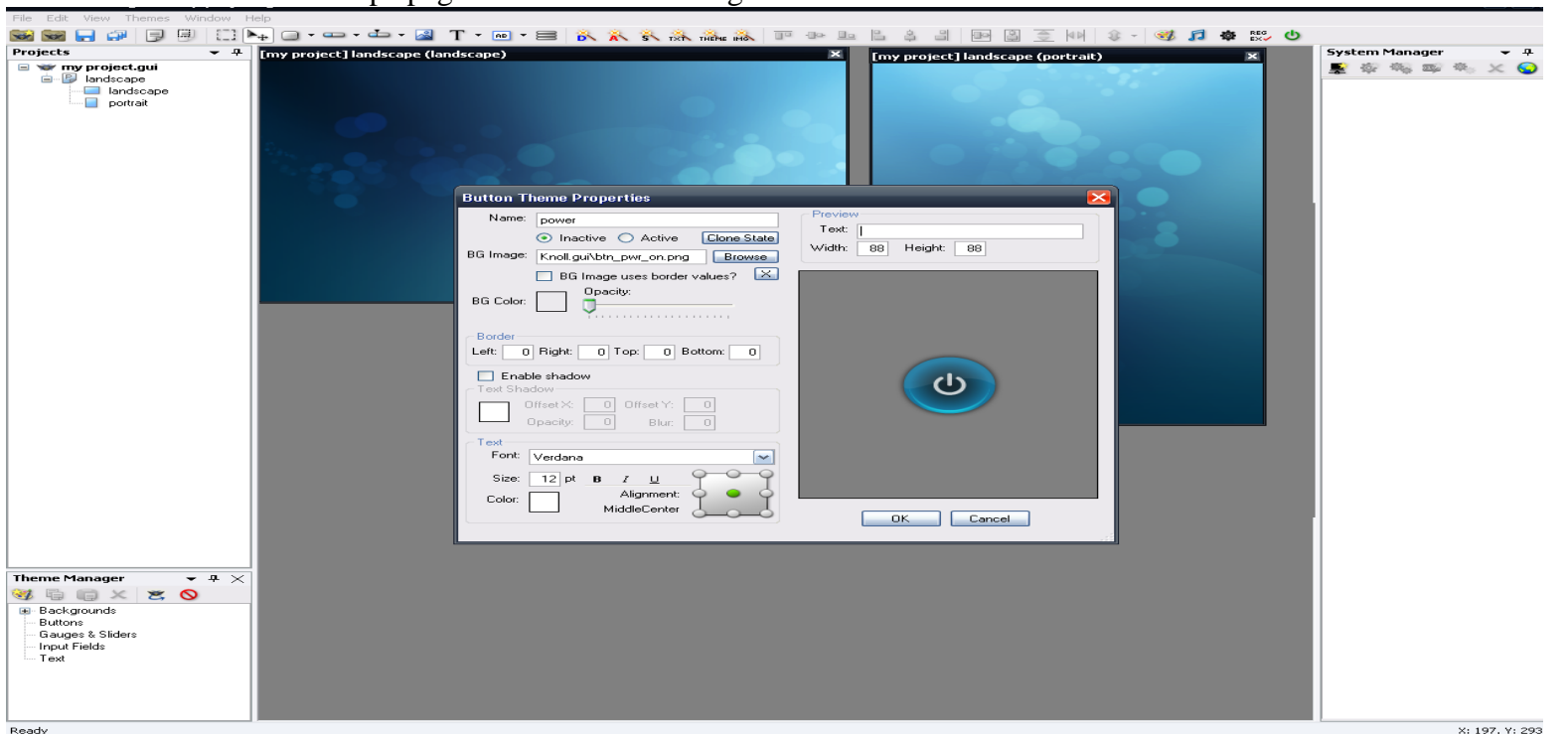
- D. Double click on landscape and portrait, two new portrait and landscape pages in these formats will appear on the main page. Go to theme manager, click create new theme icon, choose landscape and browse for the background image (wherever it is saved) and do the same for portrait as shown in the image below.

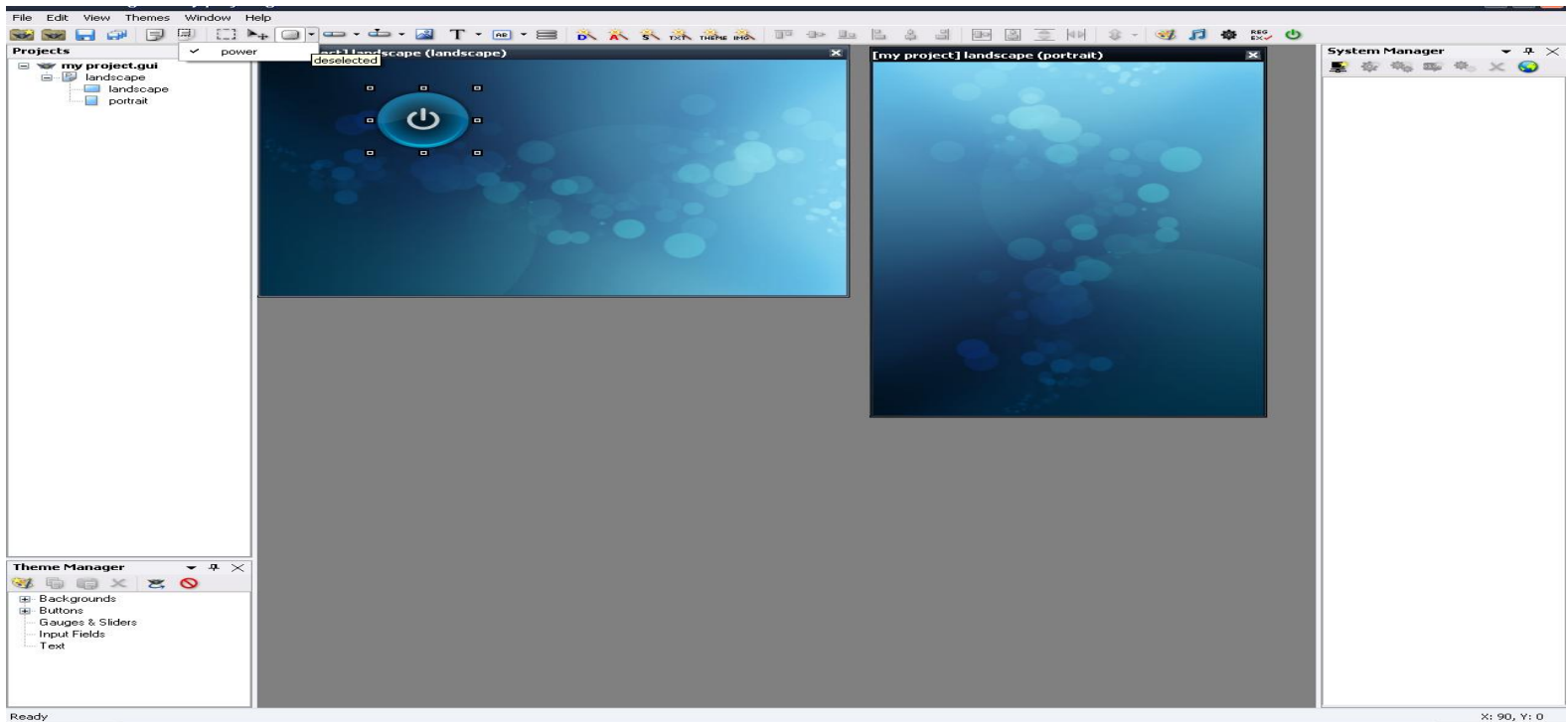


- E. Click on the middle of the landscape and portrait pages and choose the landscape theme first as shown in the image below. Do the same for portrait by clicking in the middle of portrait page and choose the portrait theme.

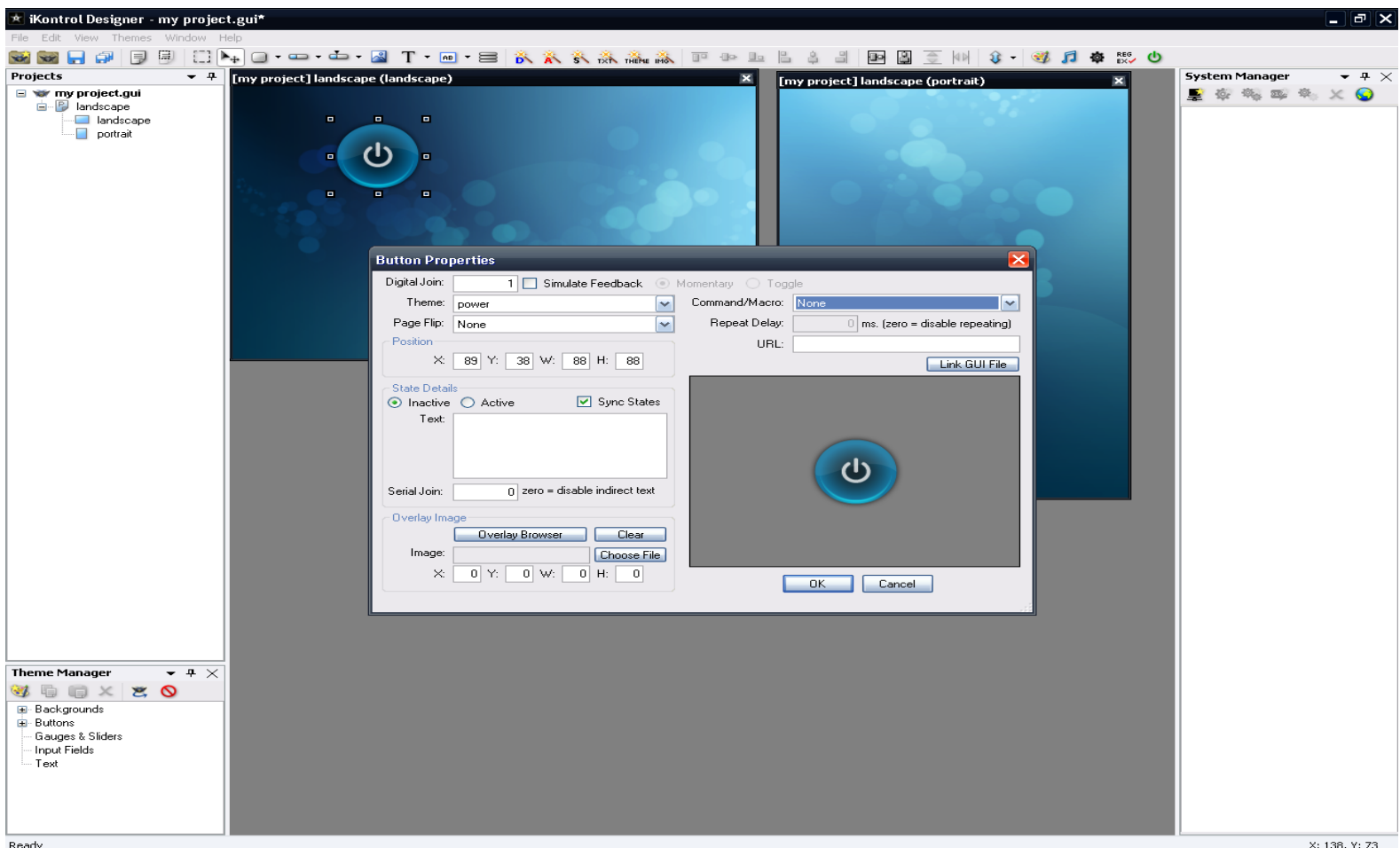


- F. After you have the background for Landscape and Portrait, the next step is to add the buttons by using theme manager>click on buttons>create new theme. Different kinds and designs of buttons can be made using Photoshop or similar software. When you click on create new theme icon, « button theme properties » window will open and choose the desired values for active and inactive states. Make sure to create each button in two different designs (for example, slightly different color) to differentiate between active state and inactive state. Once you choose the inactive state button and set the parameters, choose active and click on "clone state" and just browse for different colors or for any difference you would like for the similar buttons. Once this is done, on the top bar, select the button tool and choose the button you have just created and draw it on the landscape page as shown in the image below.



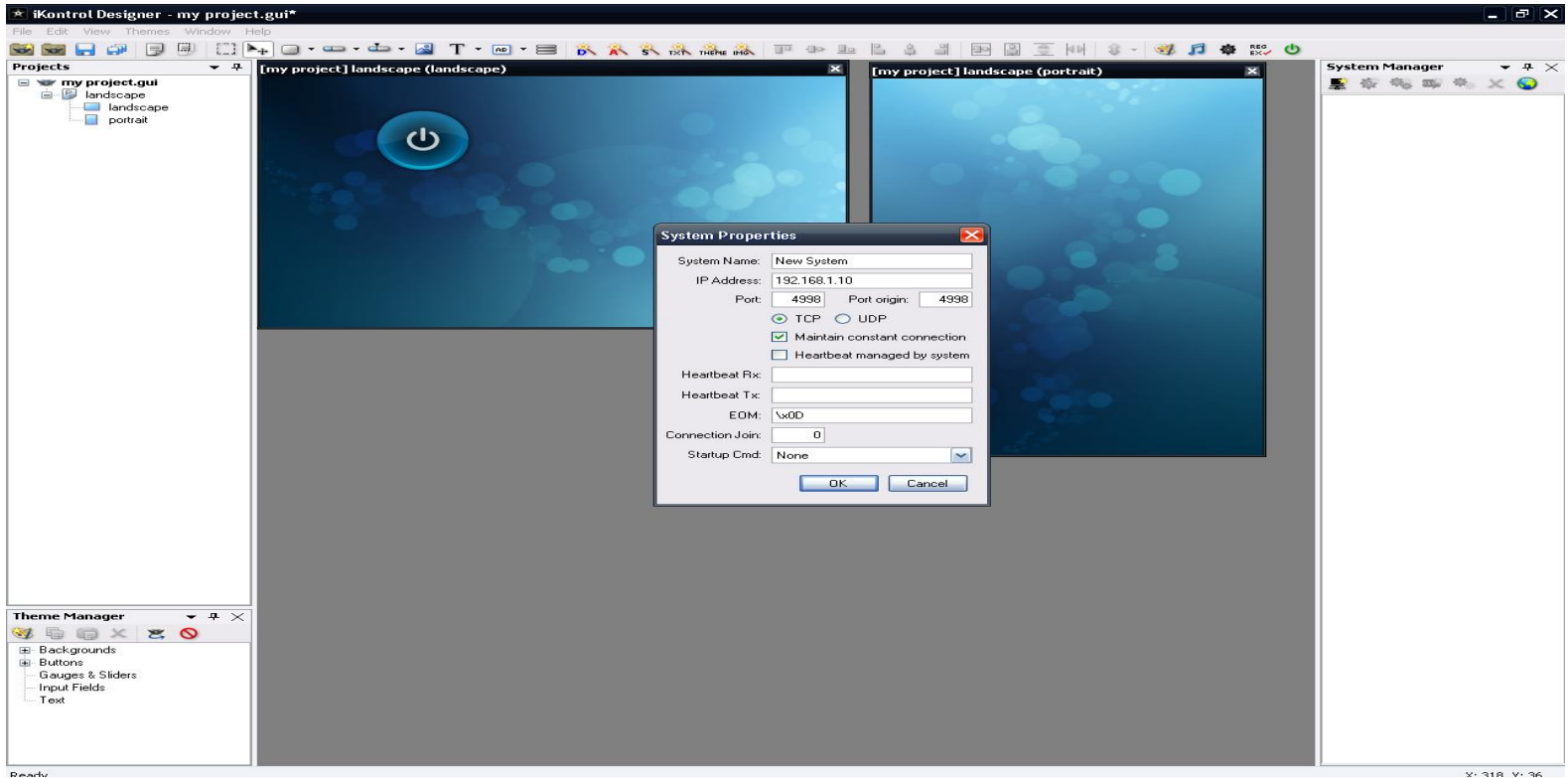


- G. Once the button is on the landscape page, right click the button and choose « match theme image size ». Double click on the button to choose button properties. Make the digital joint 1 (since this is the first button, choose 2 for second and so on). Keep power in the theme option, none in the page flip unless you want to click on this button to go to another page. In the state detail, click on active and inactive to check that you chose 2 different styles (color) of the same button. Leave serial joint 0. Command/Macro option will remain none for now.

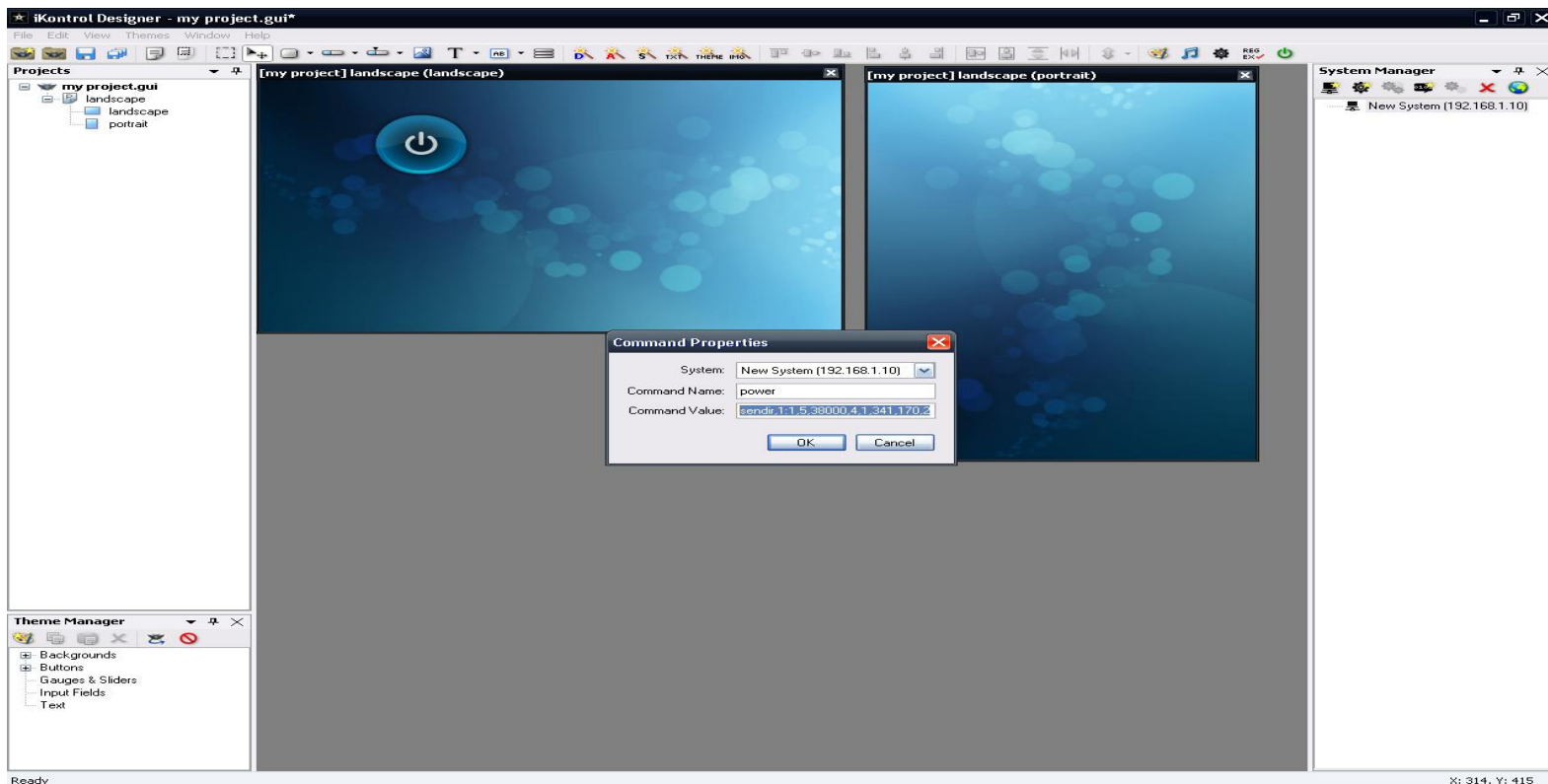


- H. In the same way, choose gauges and sliders from theme manager if needed for volume up/down, channels, etc and set up the properties.

- I. In system manager, click on add system. In the new system wizard window, skip system wizard and set system properties. Choose a system name, system's (KC hardware) IP address, choose port number 4998, EOM\x0D as shown in the image below.



- J. Go to the system manager, click on add command icon, skip wizard, and set the command properties. Name the button and give it a command value depending on if it is an IR code or command for RS232 and click OK.



- K. The same procedure applies to adding more buttons and pages. In order to get IR values, you will need IR learner hardware and Ilearn software.

